



washington

19 March 2007

The Manager
Company Announcement Office
Australian Stock Exchange Limited
Level 8, 2 The Esplanade
Perth WA 6000

Dear Sir,

Re: Preliminary Drill Results from Yarawindah Brook (Washington 80%)

Washington Resources Limited (“Washington” or the “Company”) recently completed a 28 hole reverse circulation drilling programme at its Yarawindah Brook polymetallic deposit near the rural town of New Norcia, located 135 kilometres north of Perth in Western Australia. The intervals assayed peak at 2.89% Ni and 1.52% copper. As with previous drilling, cobalt values are consistently high (best 1 metre interval returning 0.16%). Moderate palladium values are also associated with the mineralization.

The drilling programme was designed to test the source of geophysical anomalies that drilling by Washington had previously shown to be associated with mineralization. The drill holes were collared in mafic/ultramafic host rocks, or more recent, overlying sedimentary cover. Most holes were targeted to penetrate the footwall of the host rocks. However, some holes were terminated in barren mafic rocks, close to target depth.

Mineralization, consisting of nickel, copper, cobalt and platinum group metals, was intersected in a number of drill holes, and significant assays are shown in the appended table below. Drill hole locations are shown on the accompanying plan.

The polymetallic mineralization occurs within massive to disseminated pyrrhotite (an iron sulphide), which is widespread through the ultramafic rocks. Some of the mineralized material has been deformed and structurally redistributed, locally resulting in the injection of sulphides into material above and below the source horizons.

A down-hole geophysical survey to test continuity of individual lenses of mineralized sulphides commenced on 5 March 2007. This programme will be completed by the end of the month. Interpretation of data collected to date suggests some of the holes drilled in the current programme were terminated above conductive bodies that are interpreted to be the target mineralized zone. These holes will be extended in the next round of drilling with an aim of increasing the extent of identified mineralization.

Assays for drill holes YWRC 101 – 104 have not yet been returned from the laboratory.

The information in this report is based on information compiled by Mr Peter Burger, exploration geologist for Washington Resources Limited.

Mr Burger has sufficient experience relevant to the style of mineralization and type of deposit under consideration and the activity that he is undertaking to qualify as a Competent Person as defined in the 2004 Edition of the "Australasian Code for Reporting Exploration Results, Mineral Resources and Ore Reserves" ("JORC Code"). This report is issued with Mr Burger's consent as to the form and context in which the exploration results appear.

Yours faithfully

Washington Resources Limited

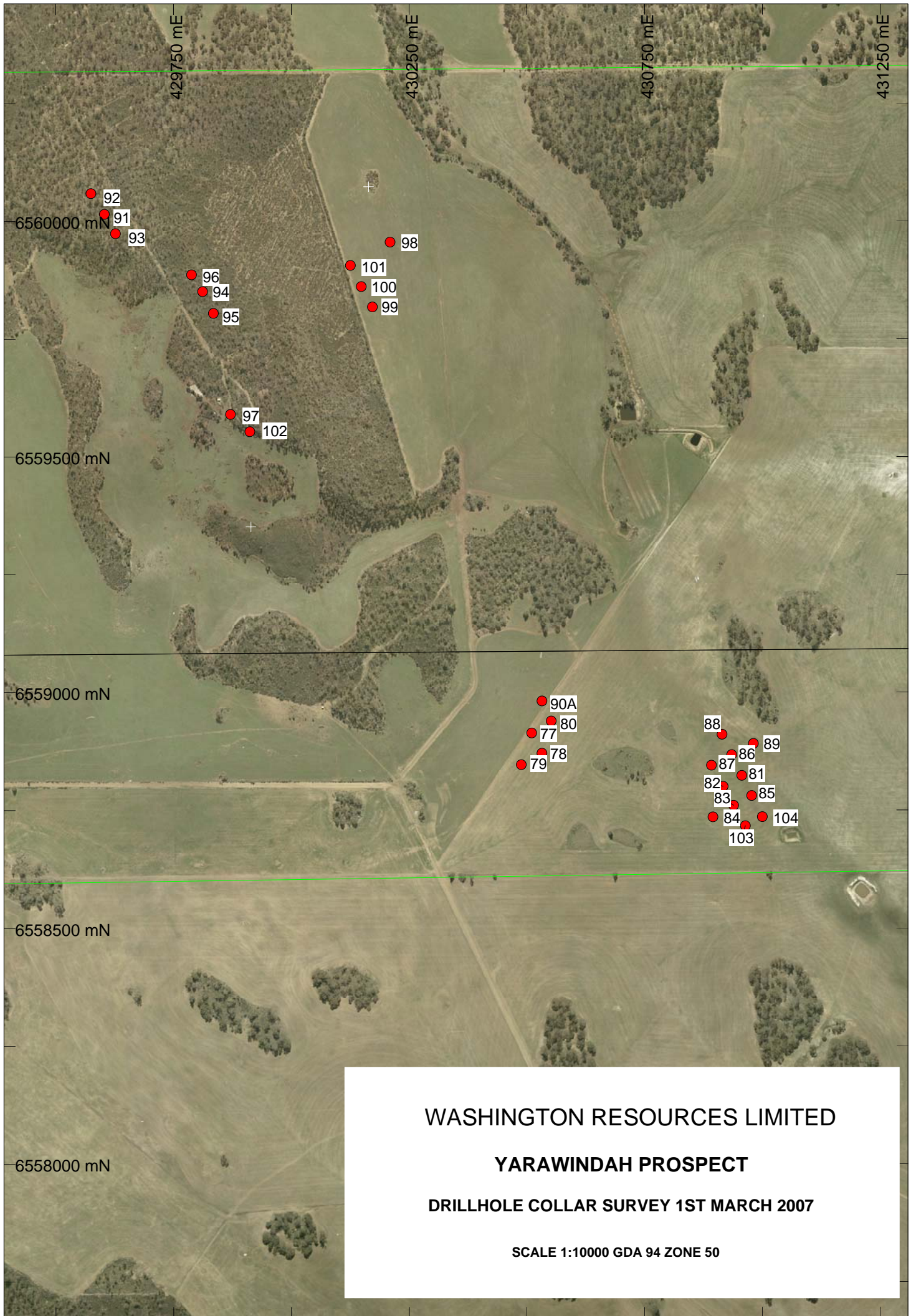
For further information, please contact:

Adrian Griffin

Washington Resources Limited

(+618) 9485 0755

(+614) 18 927 658



WASHINGTON RESOURCES LIMITED

YARAWINDAH PROSPECT

DRILLHOLE COLLAR SURVEY 1ST MARCH 2007

SCALE 1:10000 GDA 94 ZONE 50

TABLE

Bore	Local Coordinates		GDA Co		-Ordinates		Azimuth	Declination	From m	To m	Interval m	Assays				
	North	East	North	East	Au ppb	Pt ppb						Pd ppb	Ni %	Co ppm	Cu ppm/%	
YWRC 77	9,700	10,200	430,510	6,558,914	Grid West	-60 ⁰	70	72	2	2	2	40	0.88	690	3313	
YWRC 78	9,650	10,200	430,532	6,558,871	Grid West	-60 ⁰	93	94	1	21	4	35	0.23	203	1.97	
YWRC 79	9,650	10,150	430,488	6,558,847	Grid West	-60 ⁰	NSA									
YWRC 80	9,700	10,250	430,552	6,558,939	Grid West	-	34	35	1	9	2	46	0.14	155	0.96	
YWRC 81	9,400	10,550	430,956	6,558,824	Grid West	60 ⁰	39	40	1	22	1	62	0.41	304	0.93	
YWRC 82	9,400	10,500	430,916	6,558,800	Grid West	-60 ⁰	100	101	1	12	15	461	0.72	447	1713	
YWRC 83	9,350	10,500	430,939	6,558,760	Grid West	-60 ⁰	121	122	1	8	15	571	0.72	386	1261	
YWRC 84	9,350	10,450	430,895	6,558,736	Grid West	-60 ⁰	71	72	1	8	1	71	0.89	677	3632	
YWRC 85	9,350	10,550	430,997	6,558,781	Grid West	-60 ⁰	144	145	1	37	38	945	0.75	366	1326	
YWRC 86	9,450	10,550	430,935	6,558,868	Grid West	-60 ⁰	74	75	1	11	1	515	1.46	643	1490	
YWRC 87	9,450	10,500	430,892	6,558,845	Grid West	-60 ⁰	77	81	4	15	1	527	1.67	739	2892	
YWRC 88	9,500	10,550	430,914	6,558,911	Grid West	-60 ⁰	inc. 78	79	1	13	1	593	2.89	1274	5378	
YWRC 89	9,450	10,550	430,981	6,558,891	Grid West	-60 ⁰	NSA									
YWRC 90A	9,750	10,253	430,532	6,558,982	Grid West	-60 ⁰	83	84	1	7	2	207	0.18	198	1.12	
YWRC 91	11,100	9,950	429,603	6,560,015	Grid West	-60 ⁰	90	93	3	27	5	143	1.30	931	5070	
YWRC 92	11,150	9,950	430,574	6,560,059	South West	-60 ⁰	inc. 91	92	1	22	7	145	2.27	1585	2860	
YWRC 93	10,950	9,950	429,626	6,559,973	North West	-60 ⁰	91	92	1	9	5	196	2.55	1479	2539	
YWRC 94	10,850	10,050	429,812	6,559,851	Grid West	-60 ⁰	130	131	1	8	<1	205	0.76	575	3637	
YWRC 95	10,800	10,050	429,834	6,559,805	North West	-60 ⁰	135	136	1	31	1	219	0.33	261	1.07	
YWRC 96	10,900	10,050	429,788	6,559,886	South West	-60 ⁰	145	146	1	35	2	226	0.12	132	1.17	
YWRC 97	10,600	9,980	429,871	6,559,590	South West	-60 ⁰	NSA									
YWRC 98	10,750	10,450	430,209	6,559,955	South West	-60 ⁰	67	68	1	108	12	102	0.18	140	8876	
YWRC 99	10,650	10,350	430,172	6,559,818	Grid West	-60 ⁰	69	70	1	102	8	125	0.14	106	9126	
YWRC 100	10,700	10,350	430,148	6,559,861	Grid West	-60 ⁰	NSA									
YWRC 101	10,750	10,350	430,125	6,559,906	Grid West	-60 ⁰	92	95	3	254	137	829	0.30	197	1.11	
YWRC 102	10,550	9,995	429,912	6,559,553	Grid West	-60 ⁰	107	110	3	44	53	502	0.50	264	6331	
YWRC 103	9,300	10,500	430,964	6,558,717	Grid West	-60 ⁰	94	95	1	92	12	321	0.24	174	9201	
YWRC 104	9,300	10,550	431,000	6,558,736	Grid West	-60 ⁰	98	101	3	30	13	418	0.47	285	1.12	
YWRC 94	10,850	10,050	429,812	6,559,851	Grid West	-60 ⁰	48	49	1	7	3	94	0.86	429	3413	
YWRC 95	10,800	10,050	429,834	6,559,805	North West	-60 ⁰	60	61	1	1	<1	88	0.48	337	1.52	
YWRC 96	10,900	10,050	429,788	6,559,886	South West	-60 ⁰	76	79	1	6	6	617	0.73	434	5207	
YWRC 97	10,600	9,980	429,871	6,559,590	South West	-60 ⁰	77	77	1	7	<1	1196	1.23	735	4039	
YWRC 98	10,750	10,450	430,209	6,559,955	South West	-60 ⁰	inc 76									
YWRC 99	10,650	10,350	430,172	6,559,818	Grid West	-60 ⁰	NSA									
YWRC 100	10,700	10,350	430,148	6,559,861	Grid West	-60 ⁰	95	97	2	144	180	603	0.26	384	8955	
YWRC 101	10,750	10,350	430,125	6,559,906	Grid West	-60 ⁰	92	95	3	254	137	829	0.30	197	1.11	
YWRC 102	10,550	9,995	429,912	6,559,553	Grid West	-60 ⁰	107	110	3	44	53	502	0.50	264	6331	
YWRC 103	9,300	10,500	430,964	6,558,717	Grid West	-60 ⁰	94	95	1	92	12	321	0.24	174	9201	
YWRC 104	9,300	10,550	431,000	6,558,736	Grid West	-60 ⁰	98	101	3	30	13	418	0.47	285	1.12	

Legend:

NA = No Assays

NSA = No Significant Assays

AI = Assays Incomplete